



W75



# At home in Zossen

A family home in Brandenburg





Bokc«Ttä«kig ”«k  
kl;TTiTck Tckick.



Non-binding visualisation - illustration reveals special features



# Bí;«kc«k”íg, Bcíli«, kokc«Ttä«kig

## Enchanted landscapes

Discover Brandenburg. From vast lake landscapes through dense pine forests to the tranquil Spreewald with its extensive waterways. In this region, one surprise follows another.



## At home in Zossen

The town of Zossen, with a population of 21,600, is located in the heart of Brandenburg. The town shines with its typical Brandenburg appearance: down-to-earth, baroque, quaint. Historic buildings such as the Trinity Church and the School Museum with its characteristic half-timbered appearance make this place a real eye-catcher.



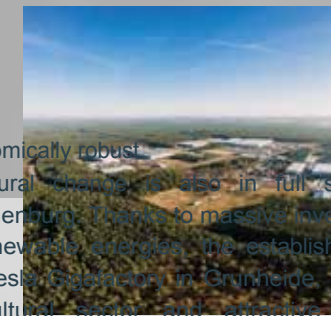
## Off to Berlin

No problem from Zossen. Thanks to the easy connections, you can reach Germany's capital in no time and enjoy it to the fullest. How about a great dinner in Charlottenburg, art and culture in Mitte or an evening in the Kreuzberg scene?



## Brandenburg, home to castles

The density of castles and manor houses in Brandenburg is impressive for historical and cultural reasons. There are more than 500 in the region. The highlight: Sanssouci Palace in Potsdam, which is a UNESCO World Heritage Site.



## Economically robust

Structural change is also in full swing in Brandenburg. Thanks to massive investments in renewable energies, the establishment of the Tesla Gigafactory in Grünheide, a strong agricultural sector and attractive tourism offerings, the economic curve is pointing steeply upwards.



# Aíkcitc« i« ”«k ”m ZoTTc«

## Berlin Brandenburg Airport (BER)

- Location: Schönefeld (approx. 25 km northeast of Zossen)
- Industry: Air transport
- Description: BER is the region's central airport and a major employer in the aviation industry.

## DHL Logistics Centre Ludwigsfelde

- Location: Ludwigsfelde (approx. 20 km northwest of Zossen)
- Industry: Logistics
- Description: The DHL parcel centre in Ludwigsfelde is a so-called mega parcel centre with a high sorting capacity of up to 50,000 parcels per hour.

## EDEKA Logistics Centre Mittenwalde

- Location: Mittenwalde (approx. 10 km northeast of Zossen)
- Industry: Food retail / Logistics
- Description: The EDEKA logistics centre in Mittenwalde supplies around 400 stores in Berlin and Brandenburg.

## ALDI GmbH & Co. KG Mittenwalde

- Location: Mittenwalde
- Industry: Food retail
- Description: ADI Nord operates a branch in Mittenwalde.

## Tesla Gigafactory Berlin-Brandenburg

- Location: Grunheide (Mark) (approx. 35 km east of Zossen)
- Industry: Automotive production (electric vehicles)
- Description: The Tesla Gigafactory in Grunheide is one of the most modern production facilities for electric vehicles in Europe.

## DACHSER SE

- Location: Schönefeld (approx. 30 km northeast of Zossen)
- Industry: Logistics
- Description: DACHSER operates a logistics centre in the Dahme-Spreewald district.

## NOWEDA Pharma-Handels GmbH

- Location: Mittenwalde
- Industry: Pharmaceutical wholesale
- Description: NOWEDA operates a logistics centre for pharmaceutical wholesale in Mittenwalde.

## GAAC Commerz GmbH

- Location: Mittenwalde
- Industry: Logistics / Freight forwarding
- Description: GAAC Commerz is a logistics company based in Mittenwalde.

## Motzener Kunststoff- und Gummiverarbeitung GmbH

- Location: Mittenwalde
- Industry: Plastics and rubber processing
- Description: The company is active in the processing of plastics and rubber and is based in Mittenwalde.

## frigo-log GmbH

- Location: Mittenwalde
- Industry: Refrigerated and frozen food logistics
- Description: frigo-log is a company specialising in refrigerated and deep-freeze logistics and is based in Mittenwalde.

## Dannpower Group

- Location: Brandenburg
- Industry: Energy supply
- Description: The company develops and implements energy supply solutions for highly efficient and environmentally friendly wind, electricity and cooling generation.

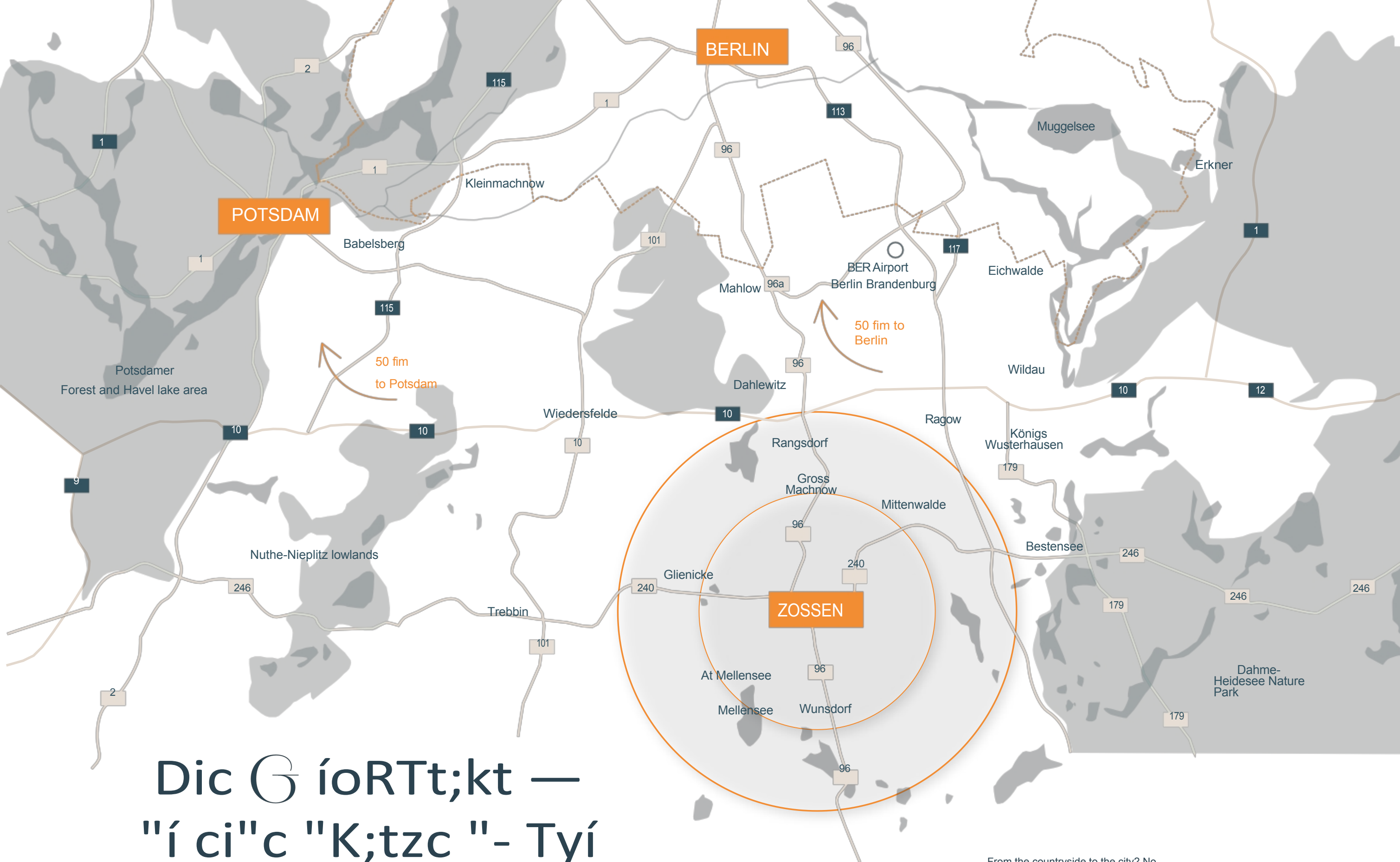
## Lafim Diafonie

- Location: Several locations in Brandenburg
- Industry: Social services
- Description: Lafim-Diakonie is one of the largest employers in the state of Brandenburg, with over 40 locations.

## MTU Maintenance Berlin-Brandenburg GmbH

- Location: Ludwigsfelde
- Industry: Aviation technology
- Description: The company specialises in the maintenance of aviation engines.





Dic G íoRTt;kt —  
 "í ci"c "K;tzc "- Tyí  
 "g c "tffcí "t

From the countryside to the city? No problem!  
 Thanks to its attractive location on federal highways 246 and 96, you can reach the big city in no time. The centres of Berlin and Potsdam are both 50 kilometres away and can be easily reached in 40 to 60 minutes, also by regional express train on the Dresden–Berlin line.

fi;"T,  
G;ítc«,  
l;milic«gluck



yourself and your family. There's no reason to wait any longer. Solid construction, lots of possibilities.

Zossen offers the perfect foundation for a new start in the countryside. Pack your bags and secure one of nearly 80 available units in the district of Wunsdorf. A solid stock of detached houses and semi-detached houses is just waiting to be awakened from its slumber. The strong building fabric from the 1970s comes with residential units and plots of varying sizes, so you



A new  
home in Zossen.

GcTckm;ckvoll  
lckc«  
;"ff kcm L;«k



View the available properties and find out what opportunities are available to you. What are you looking for: a cosy spot on the spacious terrace? Summer evenings and great barbecue parties? A sustainable energy supply with your own photovoltaic system and heat pump? It's in your hands.

We will, of course, provide you with comprehensive advice on the renovation and interior design of your property. Whether you are thinking big, striving for space and creating room, or would rather have a cosy home — together we will find a way.





# Site plan of the houses

- Semi-detached house with one residential unit (small)
- Semi-detached house with one residential unit (large)
- Semi-detached house with two residential units
- Detached house









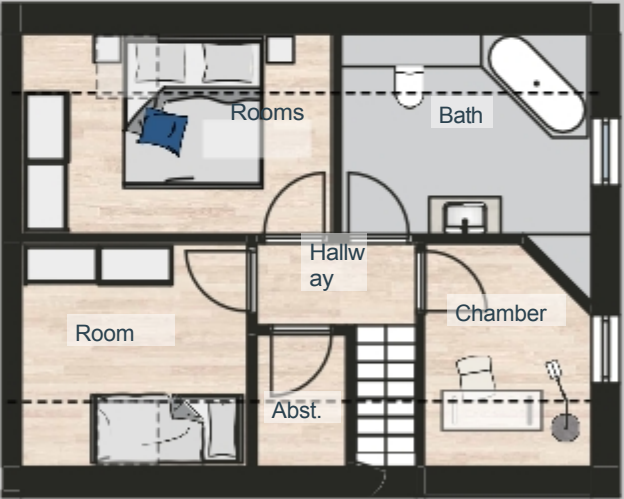
fi;"Tt?y 1

Semi-detached

Total living space  
approx. 90.00 m



Ground floor



Upper floor

Hallway	10.00 m	Hallway	2.50 m
WC	3.50	Chamber	5.00
Kitchen	8.50	Bath	8.00
Room	28.50 m	Room	9.00 m
Terrace (50%)	6.00	Room	7.50 m
Total	56.50	Distance	1.50
		Total	33.50 m

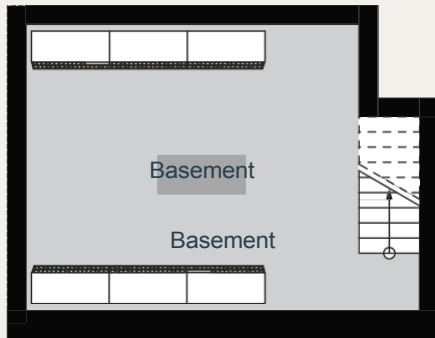
Scale 1:100 Non-binding furnishing  
suggestion



# fi;”Tt?y 1

## Semi-detached house

Total living space  
approx. 90.00 m



Basement	17.00
Basement	17.00
Total	

Scale 1:100 Non-binding

Address	House type	Living space
Agnesstraße 29	1-  Semi-detached house with one residential unit (small)	90
Agnesstraße 30	1-  DHH with one residential unit (small)	90
Agnesstraße 31	1,  Semi-detached house with one residential unit (small)	90.00
Agnesstraße 32	1 semi-  e detached house with one residential unit (small)	90
Agnesstraße 33	1-  DHH with one residential unit (small)	90
Agnesstraße 34	1-  Semi-detached house with one residential unit (small)	90
Agnesstraße 35	1-  e semi-detached house with one residential unit (small)	90
Hildegardstraße 27	1-  DHH with one residential unit (small)	94.59
Hildegardstraße 30	1-  DHH with one residential unit (small)	90.00
Hildegardstraße 33	1-  DHH with one residential unit (small)	90.00 m
Hildegardstraße 35	1-  Semi-detached house with one residential unit (small)	90.00 m
Hildegardstraße 45	1-  DHH with one residential unit (small)	90
Hildegardstraße 46	1-  DHH with one residential unit (small)	90
Hildegardstraße 49	1-  DHH with one residential unit (small)	90
Hildegardstraße 50	1-  DHH with one residential unit (small)	90
Hildegardstraße 51	1-  Semi-detached house with one residential unit (small)	90
Hildegardstraße 52	1-  DHH with one residential unit (small)	90.00
luisenstraße 2	1,  Semi-detached house with one residential unit (small)	90.00 m
luisenstraße 3	1-  e detached house with one residential unit (small)	90.00
luisenstraße 4	1-  DHH with one residential unit (small)	90.00
luisenstraße 43	1-  DHH with one residential unit (small)	90.00
luisenstraße 58	1-  DHH with one residential unit (small)	90.00
luisenstraße 72	1-  DHH with one residential unit (small)	90.00
luisenstraße 73	1-  DHH with one residential unit (small)	90.00
luisenstraße 76	1-  DHH with one residential unit (small)	90.00 m
luisenstraße 77	1-  DHH with one residential unit (small)	90.00 m
luisenstraße 78	1-  DHH with one residential unit (small)	90.00
luisenstraße 82	1-  DHH with one residential unit (small)	90.00
luisenstraße 86	1-  DHH with one residential unit (small)	90.00
luisenstraße 89	1-  DHH with one residential unit (small)	90.00



fi;”Tt?y 2

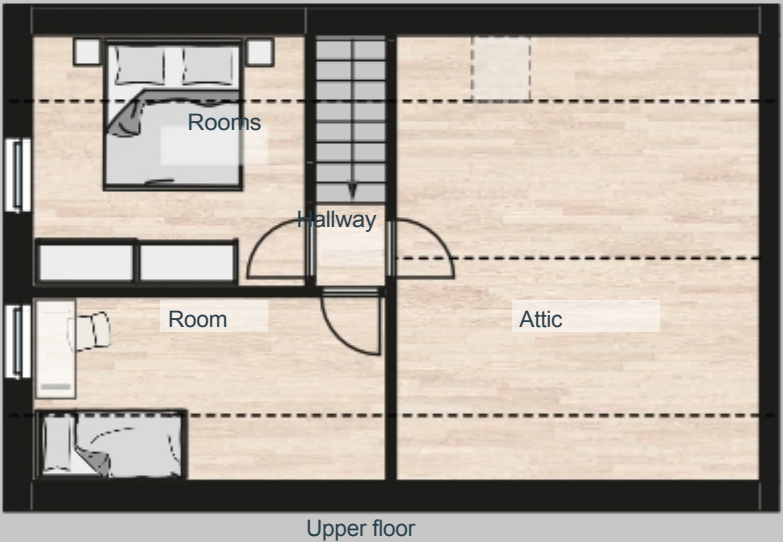
Semi-detached

Total living space  
approx. 114.00 m



Hallway	12.00 m
Distance	5.50 m
Distance	1.00 m
Bath	6.00
Kitchen	14.50
Room	13.00 m
Room	13.50 m
Terrace (50%)	6.00
Total	71.50

Scale 1:100 non-binding furnishing  
proposal



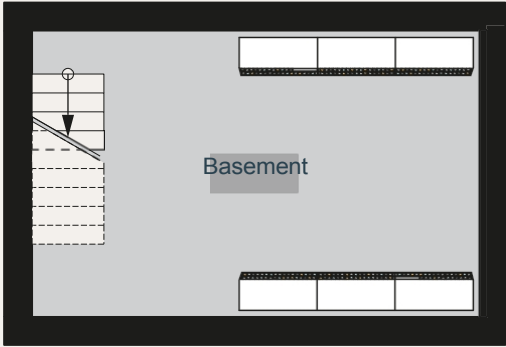
Hallway	1.00 m
Room	10.50 m
Room	10.00
Attic	24.00
Total	21.50 m



fi;”Tt?y 2

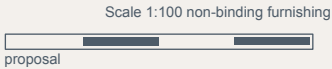
# Semi-detached

Total living space  
Approx. 114.00 m²



Basement

Basement	20
Total	20



Address	House type	Living space
Agnesstraße 2	2-  Semi-detached house with one residential unit (large)	114
Agnesstraße 3	2-  DHH with one residential unit (large)	114
Agnesstraße 4	2-  e semi-detached house with one residential unit (large)	114.00
Agnesstraße 5	2-  e semi-detached house with one residential unit (large)	114
Agnesstraße 6	2-  e semi-detached house with one residential unit (large)	114.00
Agnesstraße 11	2-  e semi-detached house with one residential unit (large)	114
Agnesstraße 12	2-  e detached house with one residential unit (large)	114.00 m
Agnesstraße 18	2-  e semi-detached house with one residential unit (large)	114.00
Agnesstraße 23	2-  e semi-detached house with one residential unit (large)	114
Agnesstraße 24	2-  e semi-detached house with one residential unit (large)	114
Agnesstraße 42	2-  e semi-detached house with one residential unit (large)	114
Agnesstraße 45	2-  e semi-detached house with one residential unit (large)	114
Friedensstraße 15	2-  DHH with one residential unit (large)	114
Hildegardstraße 2	2-  e detached house with one residential unit (large)	114.00 m
Hildegardstraße 4	2-  Semi-detached house with one residential unit (large)	114.00
Hildegardstraße 6	2-  DHH with one residential unit (large)	114
Hildegardstraße 8	2-  DHH with one residential unit (large)	114.00
Hildegardstraße 10	2-  DHH with one residential unit (large)	114.00
Hildegardstraße 14	2-  DHH with one residential unit (large)	114
Hildegardstraße 15	2-  e semi-detached house with one residential unit (large)	114.00
Hildegardstraße 18	2-  e semi-detached house with one residential unit (large)	114.00
Hildegardstraße 22	2-  e detached house with one residential unit (large)	114.00 m
luisenstraße 7	2-  e detached house with one residential unit (large)	114.00
luisenstraße 10	2-  DHH with one residential unit (large)	114.00
luisenstraße 11	2-  DHH with one residential unit (large)	114.00



fi;”Tt?y 3

Semi-detached

Total living space  
approx. 176.00 m

Scale 1:100 Non-binding furnishing  
suggestion



Ground floor



Upper floor

Entrance	5.50 m		
Hall	4.50		
Bath	4.00 m		
Kitchen	6.50		
Room	13.00 m		
Room	17.50 m		
Room	15.00 m		
Terrace (50%)	6.00		
Total	66.50		

Hallway	6.50		
Bath	6.50		
Kitchen	9.00 m		
Room	17.00 m		
Room	15.50		
Room	12.50		
Total	67.00 m		

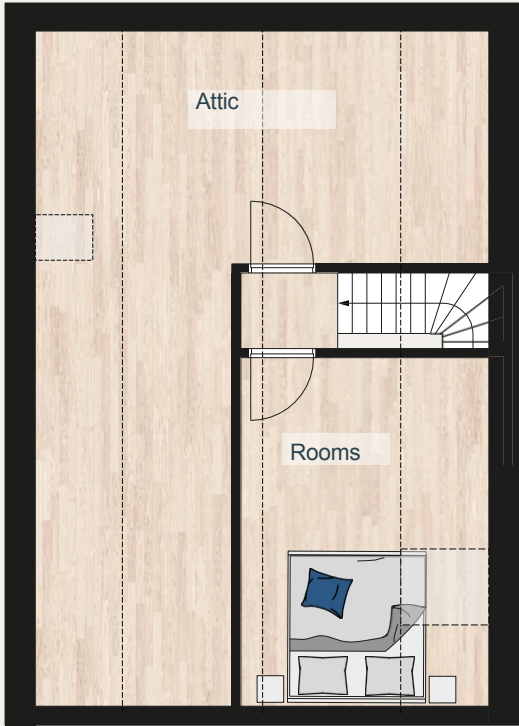


fi;”Tt?y 3

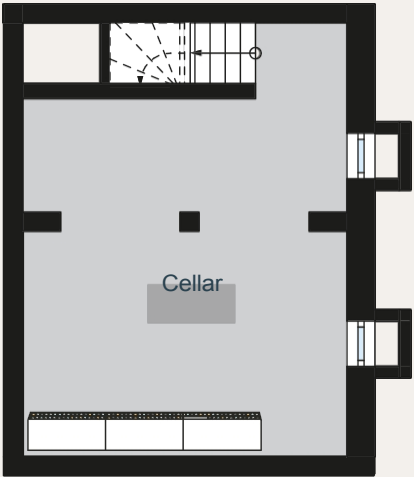
Semi-detached

Total living space  
approx. 176.00 m

Scale 1:100 Non-binding furnishing  
suggestion



Attic



Basement

Hall	1.50
Room	12.00 m
Attic	26.50
Total	13.50

Basement	21.00
Total	21.00

Address	House type	Living space
luisenstraße 15	3-  DHH with two residential units	176.00 m
luisenstraße 16	3-  e detached house with two residential units	176.00
luisenstraße 17	3-  DHH with two residential units	176
luisenstraße 18	3-  DHH with two residential units	176.00
luisenstraße 19	3-  DHH with two residential units	176.00
luisenstraße 20	3-  DHH with two residential units	176.00
luisenstraße 24	3-  DHH with two residential units	176.00
luisenstraße 25	3-  DHH with two residential units	176.00
luisenstraße 26	3-  DHH with two residential units	176.00 m²
luisenstraße 28	3-  DHH with two residential units	176.00 m
luisenstraße 30	3-  DHH with two residential units	176



fi;"Tt?y 4

Detached house

Total living space  
approx. 114.00 m

Scale 1:100 Non-binding furnishing  
suggestion



Ground floor

Hallway	3.50 m
Hallway	1.50 m
Room	13.50
Room	12.50 m
Room	21.00 m
Kitchen	8.50 m
WC	4.50 m
Terrace (50%)	6.00
Total	71.00



Upper floor

Room	40.50 m
Kitchen	4.00
WC	2.50
Total	47.00

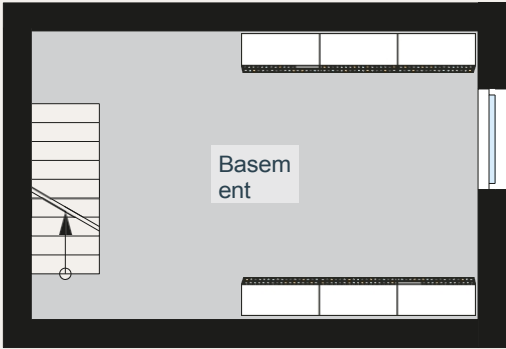


fi;”Tt?y 4

Detached house

Total living space  
approx. 114.00 m

Scale 1:100 Non-binding furnishing  
suggestion



Basement

Basement	20.50
Total	20.50

Address	House type	Living space
Agnesstraße 25	4   detached house	114.00 m
Agnesstraße 27	4   Detached house	114.00 m
Agnesstraße 28	4   detached house	114.00 m
Agnesstraße 37	4   detached house	114.00 m
Friedensstraße 19	4   detached house	114.00 m
Hildegardstraße 13	4   detached house	114.00 m
Luisenstraße 36	4   Detached house	114.00 m
Luisenstraße 81	4   detached house	114.00 m

# W75

TM Real Estate AG, Sonnenbergerstraße 16, 65193 Wiesbaden, [tm-property-gruppe.de](http://tm-property-gruppe.de), [fiontafit@tm-property.de](mailto:fiontafit@tm-property.de)

Disclaimer All information contained in this brochure reflects the current status of the design at the time of printing and is not binding. Views, floor plans and fittings are based on data that may vary during further planning phases. The floor plan examples shown may not be to scale and are approximate. The furnishings shown are to be understood as design suggestions and are not included in the scope of equipment. No guarantee can be given for the completeness of the information. All documents have been compiled with the utmost care, but errors cannot be ruled out. Only the notarised documents are binding for the execution. The seller reserves the right to make changes to the building specifications/construction that do not reduce the value.

Credits [stock.adobe.com](https://stock.adobe.com/) | @olezzo, @Ivan, @Petro, @artjafara, @dietwalther, @Enrico Obergefull, @Sulamith Sallmann, @william87, @tanyaeroko, @Yulia, @dbmjhjrj, @wideeyes, @Michael, @Aleksandra Konoplya, @HN Works, @niklask19312049. ©(Jlco) Julia Amaral Visualisations & Design ©Raum Visionen

